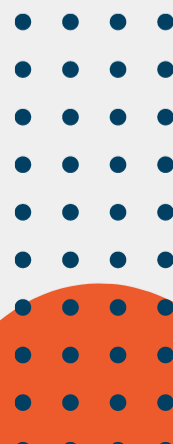




FIGREP FIGURE REPOSITORY

USER GUIDE

figrep.com





FIGREP USER GUIDE

WHAT IS FIGREP?

Figrep indexes millions of publications and saves the images in it, along with the descriptions of the images. Figrep extracts images and figures that are key in using scientific knowledge from academic publications and saves them as a database. With Figrep, users can easily search for images based on image texts or post metadata using keywords. Figrep is an innovative and pioneering platform for searching academic images.

You can easily download the pictures you find on Figrep from a subscribed university network or by registering with the edu.tr e-mail address of a subscribed university. Figrep adds a translucent watermark to images when accessed from non-subscribed institutions, and these watermarks do not appear when the subscriber is entered from the institution.

Figrep is an academic search engine it only indexes academic publications. It contains tens of millions of images in millions of publications. You can download all these images and use them for academic purposes, provided that you cite the publication. Figrep meets all needs in an academic image search for users who prepare both publications, presentations and reports.

HOW TO USE FIGREP?

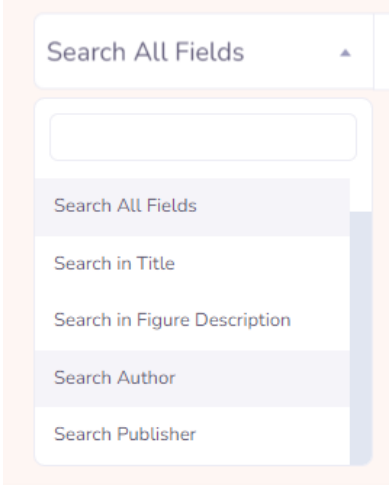
You can search using keywords on the Figrep homepage. This section explains how to search.



Figure 1. Figrep Main Page

You can search in Figrep without being a member. However, your search will have a watermark on it. In order to make a call without a watermark, you must enter from a subscribed institution network or log in as a member.



Figure No	Mark No	Description
1	1	You can use this menu to register. You can use all the features without registering while in the corporate network. If you are outside the institution, you must register. You must also be registered when you are in-house to perform operations such as your search history and managing your favorites.
1	2	It allows registered users to login. In this section, there is also the forgot password section. If you forget your password, a reminder link will be sent to your e-mail.
1	3	Figrep provides service with an English and Turkish interface. The data that comes as a result of the search has no connection with the Interface language. The search result always comes with the keyword. This language option is only for buttons and menus in the interface.
1	4	 <p>Figrep offers 4 search options. When the "Search in Title" option is selected, the keyword is only searched in the title section of the article. When "Search Author" is selected, search for keywords only within author names. When "Search in Figure Description" is called, it searches within the part adjacent to tables and figures and where definition/explanation is accepted, when "Search in All Fields" is selected, it searches all three fields and returns a single result. If you do not make a selection in this menu, it will search with the "Search All Fields" option as standard.</p>
1	5	You can search by typing your search word(s) here. The system does not allow you to search empty, you can search with as long words as you want. Increasing the number of search words will decrease the success of finding figures. This section has auto-complete feature. In other words, after typing two letters of the word you will search, it offers you a suggestion. You do not have to use these suggestions.
1	6	It will search with the keyword you wrote in the section selected with the Search button.
1	7	If you have logged in from the corporate network, your institution logo should appear in the seventh field. If your institution logo is not visible and you are not logged in, results with a watermark will appear.

Logging in or not does not change the results. A watermark will appear on the pictures when not logged in or connected from the corporate network.



GIRIŞ YAP & KAYIT OL

The screenshot shows a registration form titled "Register". It contains the following fields and elements:

- Name surname:** A text input field.
- Institution:** A dropdown menu with the text "Select Institution".
- E-mail:** A text input field with a dropdown menu to its right labeled "Select Institution".
- Password:** A text input field.
- Degree:** A dropdown menu with the text "Choose Degree".
- Register:** An orange button at the bottom of the form.

Figure 2. Register

With the register menu, subscriber institution users can easily register. After selecting the institution information in the register menu, the suffix of the institution e-mail address next to the e-mail address will automatically appear. If your institution has more than one e-mail suffix, you must choose your own e-mail suffix. Figrep only accepts you to subscribe with your edu.tr accounts.

You must open the confirmation e-mail sent to the "edu.tr" account you provided during registration and confirm your membership by clicking the link in the e-mail. If you do not have access to your e-mail, only your institution's Library and Documentation Department can provide your membership.

The screenshot shows a login form titled "Login". It contains the following elements:

- Giriş Yap / Register:** Two buttons at the top, one orange and one white.
- Email:** A text input field.
- Password:** A text input field.
- Login:** An orange button.
- I forgot my password:** A link below the password field.

Figure 3. Sign in

Users who have completed the registration process can log in using the login menu, whether they are in-house or not. Login users can easily search, add figures to their favorites, and check their search history.



SEARCH RESULTS

Figure 4. Results Page

Figure No	Mark No	Description
4	1	It writes the information about how many figures are found in the search result.
4	2	The number of images on your screen is included.
4	3	The screen in Figure 1 shows the search option you have made. You can search again by changing the option from here.
4	4	On the screen in Figure 1, the keyword you have written is shown. You can search again by changing the keyword here.
4	5	You can use this button to see the results in tabular form. You can see this screen in Figure 5.
4	6	The result display page type shown in Figure 4 is activated with this button.
4	7	It is a reduced representation of the figure that comes as a result of the search. In order to use the screen actively, the figure can be reduced or cut in the search screen. To see the original version of the figure, you need to open the detail page by clicking on the figure's name or itself.
4	8	It is the name of the publication in which the figure is located.

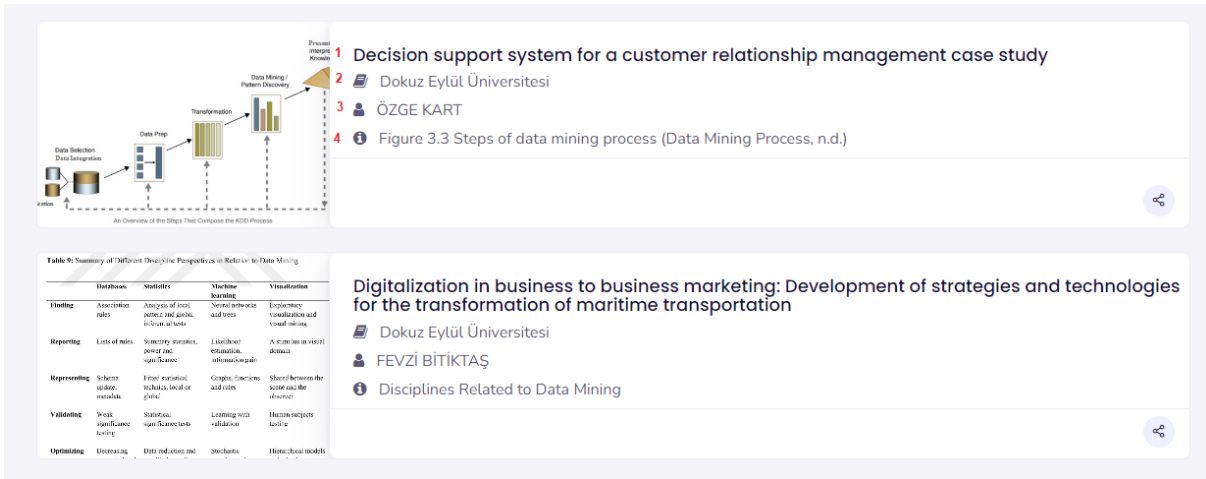


Figure 5. Result Display Page (Table)

Figure No	Mark No	Description
5	1	It is the title of the publication in which the figure is located.
5	2	It is the name of the magazine in which the figure was published.
5	3	It is the name of the author of the publication of the figure.
5	4	It is the description written above or below the figure and the figure is explained.

FIGURE DETAIL SCREEN

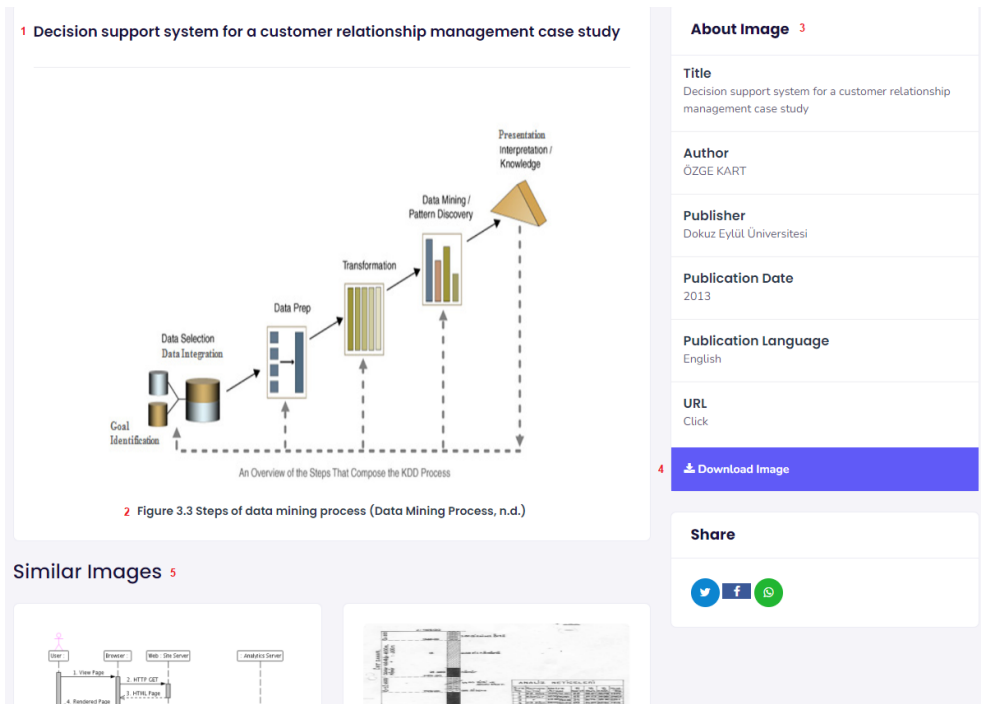


Figure 6. Figure Detail Page



Figure No	Mark No	Description
6	1	It is the title of the publication in which the figure is located.
6	2	It is the description written above or below the figure and the figure is explained.
6	3	It is the table that contains information about the publication in which the figure was published.
6	4	It is used to download the figure in high resolution.
6	5	Used to share the link of the figure. Only the user who has access to Figrep will be able to access the original version of the figure.
6	6	Two figures are displayed, the detail of which is similar to the displayed figure.